



CITY OF TORRINGTON REQUEST FOR QUOTATION - INQUIRY ONLY

This is NOT an order

DATE: April 21, 2014

FROM: CITY OF TORRINGTON
Pennie Zucco
140 Main Street, Room 206
Torrington, CT 06790

PHONE: (860) 489-2225
FAX: (860) 489-2547
E-Mail: pennie_zucco@torringtonct.org

The Purchasing Agent is authorized to offer City based bidders that exceed the lowest bid by up to 6%, the opportunity to match the lowest bid. A City based bidder within the 6% differential who agrees to accept the amount of the lowest bid will be awarded the bid. When multiple City based bidders agree to accept the amount of the low bid then the City based bidders will be invited to submit a new bid, not to exceed the low bid. The bid will then be awarded to the lowest responsive, responsible bidder.

INQUIRY NUMBER: #NEB430 Two (2) 5 Row x 21' Non-Elevated Bleachers

To receive consideration your quotation must be received by: April 30, 2014 11:00 AM

Contact name _____
Company name _____
Address _____
City, State, Zip _____

Phone # _____
Fax # _____
Address email _____

Price shall include all materials, freight or shipping charges being delivered to Maintenance Barn, 59 Winthrop St, Torrington, CT 06790 for the following:

(2) Five (5) Row x 21' Non-Elevated Bleacher, Net Seating Capacity 70/Unit

Features:

1. 100% commercial grade Aluminum Angle Understructure
2. 2"x10" Anodized Aluminum Seat Plank
3. Two (2) 2"x10" Foot Planks – Mill Finish
4. One (1) 1"x6" Riser – Row 4; Two (2) 1"x6" Risers – Top Row
5. Safety End Caps – no sharp edges.
6. Guardrail System – using 9 gauge wire and heavy duty fence pipe that is attached to the bleacher using heavy duty aluminum angle and channel. Bleacher bids shall include appropriate guardrails that meet or exceed national guidelines as shown.
7. It is the intent of the City of Torrington to "match" existing ball field bleachers as closely as possible to provide uniform aesthetics at the ball field complexes. The specifications for the existing bleachers are being provided for this purpose.
8. Meets all current codes and standards.
9. Proposals must include information on bleachers including pictures, specifications, etc.
10. The following specifications shall be construed as minimum. However, should the manufacturer's published date of specifications exceed these, they shall be considered as

minimum and shall be furnished. Any deletions or variations from the following specifications must be noted.

Pricing - Two 5 Row x 21' Non-Elevated Bleachers:	
Option – Price for the Installation of Two Bleachers: (Install bleacher unit in accordance with manufacturer written instructions and shop drawings.)	
Warranty Details:	
Submitted Proposals must include information on bleachers including pictures, specifications, etc.	
Time line for purchasing additional bleachers at proposed price:	

Warranty shall guarantee bleachers to be free from defect in materials and workmanship for a period of 1 year under normal use. Warranty period shall begin on date of completion for projects installed by manufacturer, or its subcontractors, OR warranty period shall begin on date of final delivery on projects installed by others.

Anodized finish of plank extrusions shall be covered by a 5 year warranty against loss of structural strength or finish deterioration due to exposure to weather conditions or UV rays. Discoloration of mill finish aluminum due to galvanic reaction not covered.

The City of Torrington is expecting to continue bleacher replacements as budgets allow and therefore additional bleachers may be purchased in the future. Submitted proposals shall include period to purchase additional bleachers at proposed price.

*****Vendor responsible to check City website for addendum to be submitted with bid*****

The City of Torrington reserves the right to award or reject any or all bids, or any portion thereof, to waive technicalities, to award the contract to a bidder other than the lowest bid and to award the bid and/or contracts to one or more bidders submitting essentially identical proposals and, that in the city's judgment, will best serve the public interest.

Bleacher Specifications

Non-Elevated Aluminum Angle Frame

SECTION 13125

NON-ELEVATED ALUMINUM ANGLE FRAME BLEACHERS

PART 1 - GENERAL

1.01 SECTION INCLUDES

- A. Design and fabrication of Non-Elevated angle frame bleachers

1.02 QUALITY ASSURANCE

- A. Manufacturer: National Recreation Systems, Inc.
P.O. Box 11487 Fort Wayne, In 46858-1487
- B. Manufacturer Qualifications: Manufacturer must have a minimum of ten years experience in the design and manufacture of bleachers.
- C. Welders must conform to AWS standards.
- D. Source Quality Control: Mill Test Certification.
- E. Codes and Standards: 2009 International Building Code / ICC 300 2007.

1.03 WARRANTY

- A. Warranty shall guarantee bleachers to be free from defect in materials and workmanship for a period of 1 year under normal use. Warranty period shall begin on date of completion for projects installed by manufacturer, or its subcontractors, **OR** warranty period shall begin on date of final delivery on projects installed by others.
- B. Anodized finish of plank extrusions shall be covered by a **5 year** warranty against loss of structural strength or finish deterioration due to exposure to weather conditions or UV rays. Discoloration of mill finish aluminum due to galvanic reaction not covered.

1.04 PRODUCT LIABILITY INSURANCE

- A. Product liability insurance is carried for the life of the product in the amount of \$ 2,000,000.

1.05 ENGINEERING

- A. Engineering certifications and calculations by a Registered Professional Engineer will be provided upon request.

PART 2 – PRODUCTS

2.01 ACCEPTABLE MANUFACTURER

- A. National Recreation Systems, Inc.

2.02 DESIGN

- A. Applicable Codes:
INTERNATIONAL BUILDING CODE (IBC), 2009 EDITION / ICC 300 2007
Except aisle and handicapped requirements
- B. Design Loads:
 1. Live Loads: Uniform loading - Structure = 100 psf
Uniform loading - Seat and Foot plank = 120 plf
 2. Sway Loads: Perpendicular to seats = 10 plf
Parallel to seats = 24 plf
 3. Guardrail Loads: Uniform vertical load = 100 plf
Uniform horizontal load = 50 plf
Concentrated horizontal load = 200 pounds
 4. *Wind Loads: Basic design wind speed = 150 mph (exposure "B")

***Note: Bleacher must be anchored to meet wind loads above**

2.03 NON-ELEVATED ANGLE FRAME BLEACHERS

- A. Quantity and Size: Shall consist of 1 unit(s) 5 rows high x 21 long.
Net seating capacity per unit 70 (excluding aisles, based on 18" per seat).
- B. Framework: Prefabricated aluminum angle spaced at 6' - 0" intervals joined by means of aluminum angle cross bracing.
- C. Shop connections: Welded to meet AWS standards and local code requirements

- D. Joint Sleeve Assembly: Internal splices, where required shall be two per joint, and shall penetrate the joint a minimum of 8" in each direction and be riveted at one end only to allow for contraction and expansion.
- E. Rise and Depth Dimensions: 8" vertical rise and 24" tread depth, Seat height is 17" above its respective tread.
- F. Seats: Nominal 2" x 10" anodized aluminum with anodized end caps.
- G. Treads: Nominal two (2) 2" x 10" mill finish aluminum with anodized end caps on rows 2 & up.
- H. Risers: Nominal two (2) 1" x 6" mill finish aluminum with mill finish end caps on top row.
Nominal 1" x 6" mill finish aluminum with mill finish end caps on rows 4 & up.
- I. Guardrail: Rails shall be anodized aluminum tube with end plugs and elbows where required.
All Rails shall be secured to angle supports with galvanized fasteners. Top rails at sides, rear and front shall be 42" above the leading edge of seat or walking surfaces. Rear rail support members shall be aluminum channel, side and front rail support s shall be aluminum angle.
 - 1. Chainlink System: Fencing shall consist of 9 gauge, 2" mesh galvanized chainlink fabric, heavy duty tension bands, tension bars, brace bands, combo rail endcaps, and wire ties.

2.04 MATERIALS / FINISHES

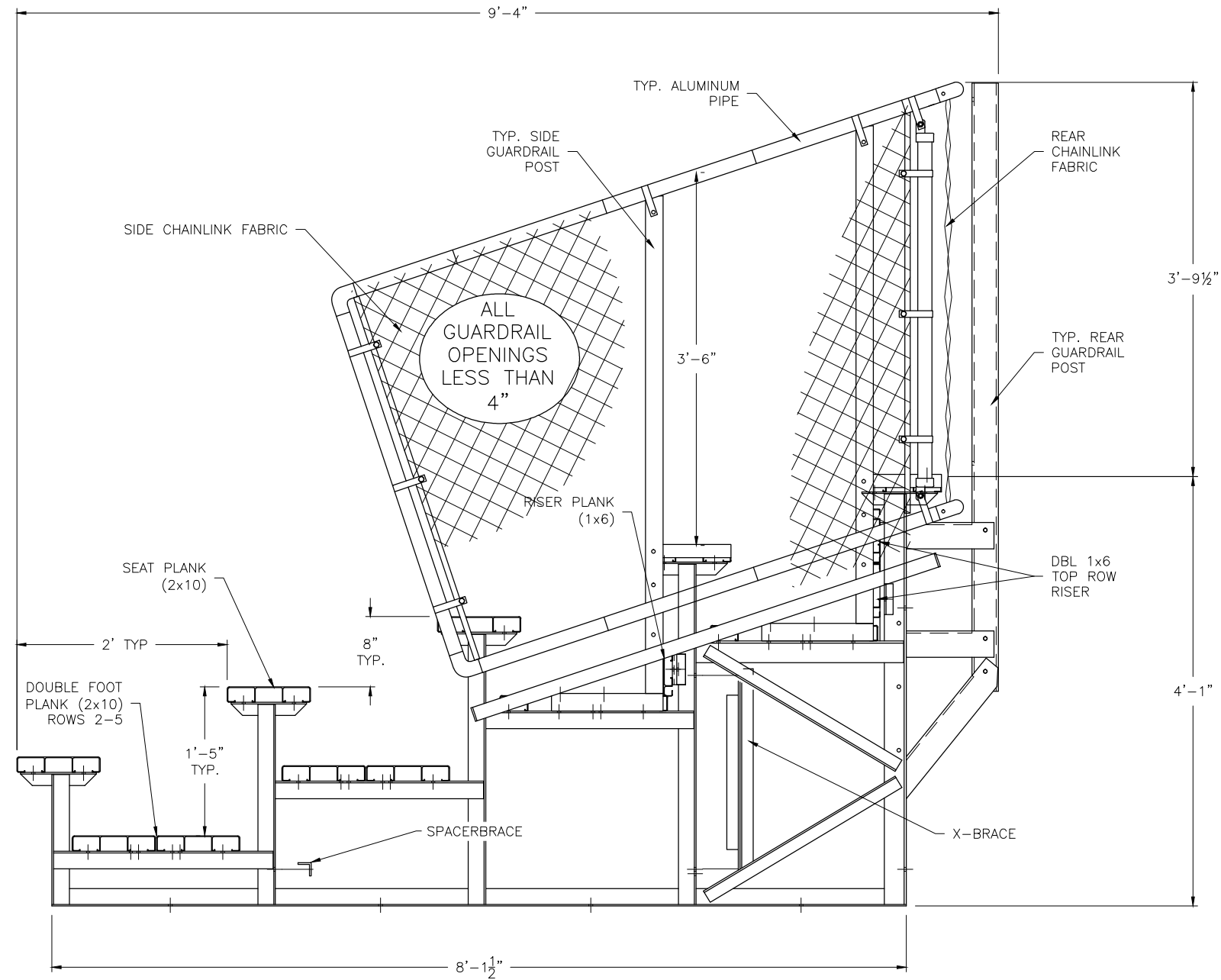
- A. Framework:
 - 1. Aluminum: Structural fabrication with aluminum alloy 6061-T6 mill finish. Each frame shall be unit-welded, using metal inert gas method, under guidelines by the American Welding Society. After fabrication all steel is hot dipped galvanized to ASTM A-123 specifications.
All crossbracing and horizontal bracing shall be aluminum angle 6061-T6 mill finish.
- B. Extruded Aluminum:
 - 1. Seat planks: Aluminum alloy 6063-T6, clear anodized 204R1, AA-M10C22A31, Class II
With a wall thickness nominally .078" for impact and deformation resistance.
 - 2. Tread and Riser Planks: Aluminum alloy 6063-T6, mill finish. With a wall thickness nominally .078" for impact and deformation resistance.
 - 3. Guardrail Pipe: 1-5/8 OD schedule 40 aluminum alloy 6105-T5, clear anodized 204R1, AA-M10C22A31, Class II.
- C. Accessories:
 - 1. Channel End Caps: Aluminum alloy 6063-T6, clear anodized 204R1, AA-M10C22A31, Class II.
 - 2. Hardware: Bolts and Nuts shall be hot dipped galvanized.
 - 3. Hold Down Clip Assembly: Aluminum alloy 6063-T6 mill finish.
 - 4. Joint Sleeve Assembly: Aluminum alloy 6061-T6, mill finish.

PART 3 – EXECUTION

3.01 INSTALLATION

- A. Install bleacher unit in accordance with manufacturer written instructions and shop drawings.

Note: Building codes may vary from site to site. The customer is responsible for verification of local code requirements.



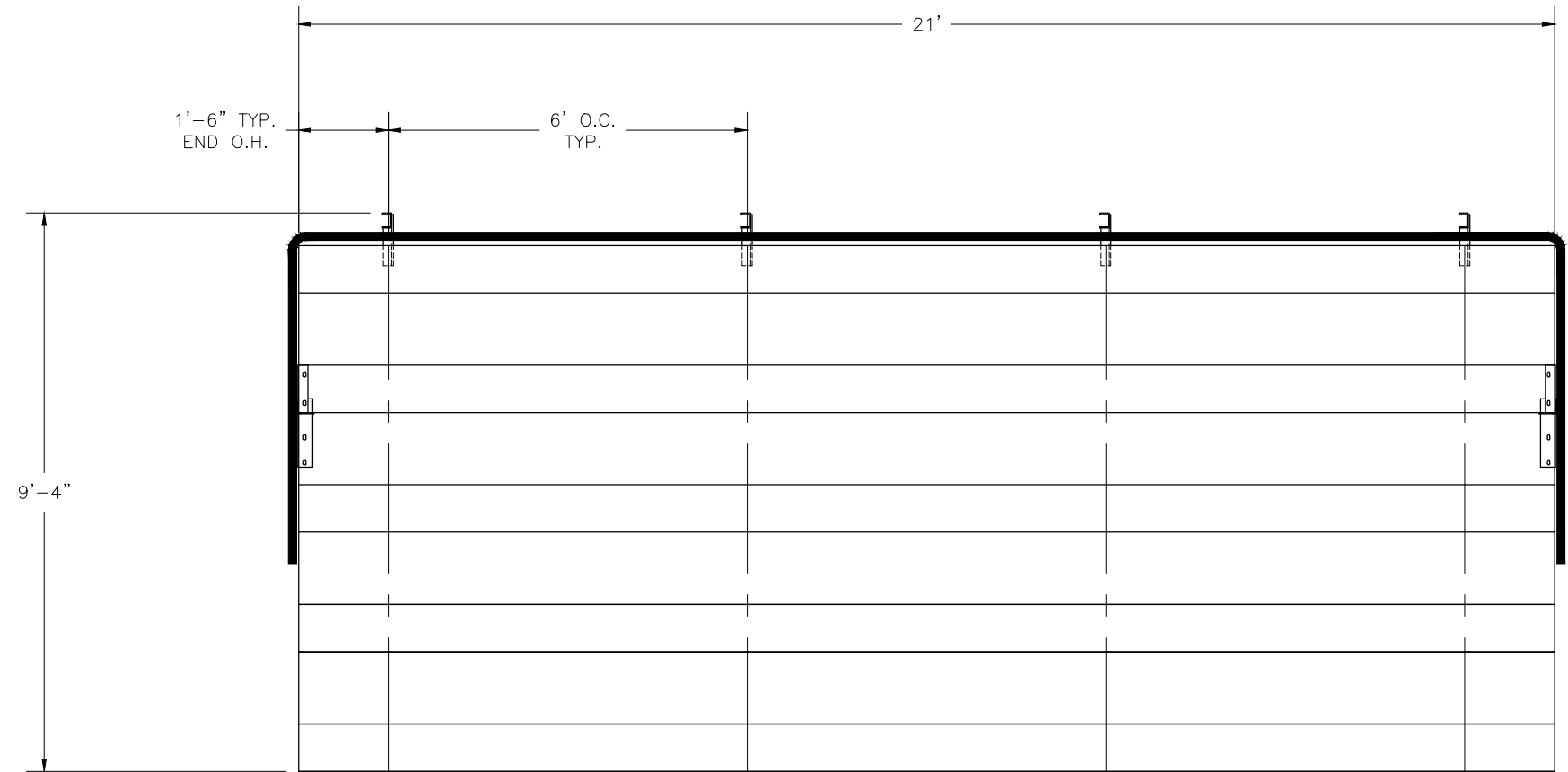
NOTE: ILLUSTRATION SHOWN WITH DOUBLE FOOT PLANK (ROWS 2-5), 1x6 RISER (ROW 4), DOUBLE 1x6 TOP ROW RISER, & CHAINLINK GUARDRAIL. PLEASE REFER TO ATTACHED SPECIFICATIONS FOR FEATURES INCLUDED WITH YOUR SPECIFIC BLEACHER.

This drawing and all information contained herein is the property of NATIONAL RECREATION SYSTEMS, INC. and is not to be reproduced without express written permission of this manufacturer. We assume no responsibility for unauthorized use of this drawing. National Recreation Systems, Inc. is not responsible for local permits and occupancy requirements.

National Recreation Systems, Inc.

P.O. BOX 11487 FORT WAYNE, IN 46858-1487

SCALE: N.T.S.	APPROVED BY:	DRAWN BY: NLN
DATE: 4/14/10		
TITLE: 5 ROW NON-ELEVATED BLEACHER SUBMITTAL (ALUM.) PREFERRED		
CUSTOMER:	DRAWING NUMBER: SUB-AN05-PRF0	



SECTION LENGTH	GROSS SEATS	ACTUAL SEATS	NO. OF ROWS	NET SEATS
21	14.00	14.00	5	70
			NET SEATS	70
			WHEELCHAIR SPACES	0
			TOTAL NET SEATING CAPACITY (BASED ON 18" PER SEAT)	70

This drawing and all information contained herein is the property of NATIONAL RECREATION SYSTEMS, INC. and is not to be reproduced without express written permission of this manufacturer. We assume no responsibility for unauthorized use of this drawing. National Recreation Systems, Inc. is not responsible for local permits and occupancy requirements.

National Recreation Systems, Inc.
 P.O. BOX 11487 FORT WAYNE, IN 46858-1487

SCALE: N.T.S.	APPROVED BY:	DRAWN BY: RM
DATE: 4/18/12	TITLE: NON-ELEV. 5 ROW x 21'-0" BLEACHER SEATING PLAN	
CUSTOMER:	DRAWING NUMBER: NE050210000B6	